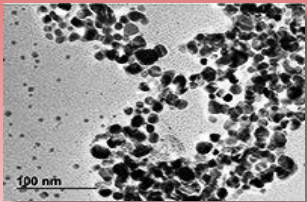


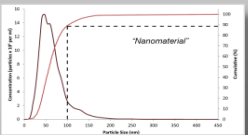
Invitation



More information:
www.nanodefine.eu



Preliminary Program



We cordially invite you to attend the **Final NanoDefine Outreach Event** to discuss with us the results the project has achieved during 4 years of intensive research (2013-2017) and their practical implications for the regulatory classification of engineered nanomaterials. **NanoDefine** has been dedicated to support the implementation of the EU Recommendation on the Definition of Nanomaterial (2011/696/EU). A novel 2-tiered analytical approach has been developed that includes both rapid and cost-effective screening and more in-depth confirmatory measurement methods, and a decision flow system, the "NanoDefiner" eTool, that gives you practical guidance to reliably classify if a material or product is or contains “nano”, or not. This final meeting is divided into a 1-day **Public Workshop** (19/09/2017) with the unique opportunity to meet the experts and learn more about the new knowledge and novel methodology developed, and into a 1-day **Outreach Event** (20/09/2017) where prototypes of the newly developed practical tools will be demonstrated to show how they can help to classify your material and to comply with current regulations, such as REACH or CLP (see preliminary program below!).

Please, **SAVE THE DATE! AND PRE-REGISTER FOR FREE!** as early as possible, as places are limited (first come first served) by sending an email with your name, address and affiliation to: events@nanodefine.eu. Both meetings can be visited also separately. Feel free to contact us if you have any question and forward this invitation to colleagues that may be also interested! **SEE YOU SOON IN BRUSSELS!**

PUBLIC WORKSHOP (19 September 2017)

Presentation and discussion of project outcome

NanoDefine objectives, concepts, results and impact

Hans Marvin, RIKILT, project coordinator

Advanced methods for nanomaterial characterization

Dan Hodoroaba, BAM

Sampling and sample preparation is critical

Katrin Löschner, DTU

Screening methods – scope and limitations

Michael Stintz, TUD

Confirmatory methods – scope and limitations

Frank von der Kammer, UNIVIE

New reference materials and standards

Robert Köber, JRC-IRMM

The NanoDefiner e-Tool for material classification

Hubert Rauscher, JRC-IHCP

OUTREACH EVENT (20 September 2017)

Demonstration of new practical tools

Material classification according to the EU Nano-definition
 NN, European Commission (tbc)

Showcase of newly developed NanoDefine tools

- New reference materials
- Novel sampling and sample preparation tools
- Rapid and cost-effective screening methods
- In-depth confirmatory methods
- Novel auto EM toolbox
- The NanoDefiner e-Tool

Need of an intelligent user-friendly measurement strategy

Round-table discussion and future outlook